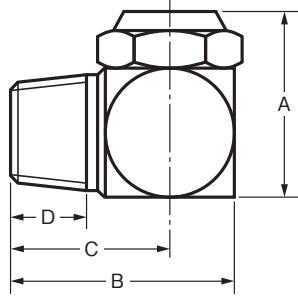


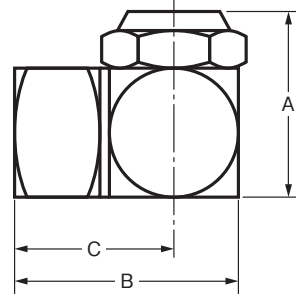
K-11

Lタイプ スプレーノズル



BSBM					
管径 in	寸法 mm				重量 g
	A	B	C	D	
¼	22	28	20	11	45
⅜	29	35	25	12	83

SUS					
管径 in	寸法mm				重量 g
	A	B	C	D	
¼	22	29	21	11	55
⅜	29	35	25	12	95



BSBM				
管径 in	寸法 mm			重量 g
	A	B	C	
¼	22	28	20	50
⅜	29	35	25	97

SUS				
管径 in	寸法mm			重量 g
	A	B	C	
¼	22	29	21	60
⅜	29	35	25	110

管径 in	吹出穴 mm	水 量 L/min / Spray 角 度										
		水圧 (MPa)	0.029	0.049	0.069	0.098	0.147	0.196	0.245	0.294	0.392	0.49
		(kg/cm ²)	0.3	0.5	0.7	1.0	1.5	2.0	2.5	3.0	4.0	5.0
¼	1.2			0.35/40°	0.55/40°	0.75/45°	0.90/50°	1.00/55°	1.15/60°	1.25/65°	1.40/65°	1.50/60°
	1.6			0.85/45°	1.00/45°	1.17/50°	1.45/60°	1.68/60°	1.85/65°	2.00/70°	2.25/70°	2.50/70°
	2.0		0.75/40°	1.22/45°	1.45/50°	1.75/60°	2.07/65°	2.40/70°	2.55/70°	2.72/75°	3.10/75°	3.42/70°
⅜	2.0		1.00/60°	1.45/65°	1.65/65°	2.00/70°	2.40/70°	2.70/75°	3.10/75°	3.40/75°	3.80/75°	4.20/70°
	2.6		1.45/60°	2.00/65°	2.50/65°	2.90/70°	3.50/70°	4.00/75°	4.53/75°	5.00/75°	5.80/75°	6.50/70°
	3.0		2.40/60°	3.00/65°	3.60/70°	4.20/70°	5.00/70°	6.20/75°	6.90/75°	7.50/75°	8.70/75°	9.90/75°
	3.2		3.40/60°	3.90/70°	4.40/70°	5.40/75°	6.40/75°	8.10/75°	8.65/80°	9.34/80°	10.65/80°	12.00/80°
	4.0		4.20/65°	4.80/65°	5.60/70°	6.55/75°	7.95/80°	9.20/80°	10.10/80°	10.73/80°	12.30/80°	13.90/80°
	4.8		4.40/70°	5.05/75°	6.00/75°	7.20/80°	8.60/80°	10.15/80°	11.35/80°	12.47/80°	14.15/80°	15.75/80°
	5.7		5.00/70°	6.00/75°	7.16/80°	8.50/80°	10.40/80°	11.85/80°	13.30/80°	14.50/85°	16.40/80°	18.30/80°
	6.4		5.90/70°	7.00/75°	8.20/80°	9.70/80°	12.00/80°	13.90/85°	15.35/85°	16.45/85°	19.00/80°	21.40/80°
7.0		7.25/75°	8.10/80°	9.50/80°	11.10/80°	13.26/80°	15.40/85°	17.10/85°	18.60/85°	21.00/80°	23.20/80°	

※記載の数値は代表値であり、保証値ではありません。