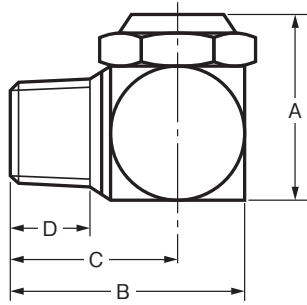
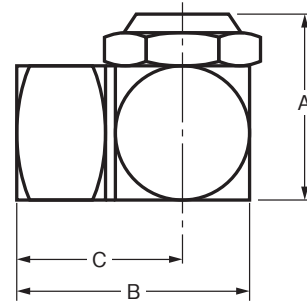


K-3

Lタイプ スプレーノズル



管径 in	寸法 mm				重量 g
	A	B	C	D	
3/8	29	35	25	12	90



管径 in	寸法 mm			重量 g
	A	B	C	
3/8	29	35	25	100

管径 in	吹出穴 mm	本体穴 mm	水 量 L/min / Spray 角 度										
			水圧 (MPa) (kg/cm ²)	0.029	0.049	0.069	0.098	0.147	0.196	0.245	0.294	0.392	0.490
3/8	3.2	1.8				0.80/125°	0.90/140°	1.20/135°	1.30/140°	1.50/140°	1.70/140°	1.95/130°	2.20/135°
	3.2	3.6		1.10/125°	1.35/130°	1.55/135°	1.95/135°	2.35/130°	2.70/125°	2.95/120°	3.25/120°	3.70/115°	4.15/110°
	4.0	1.8				0.90/100°	1.15/120°	1.40/120°	1.55/125°	1.75/125°	1.95/125°	2.35/120°	2.50/115°
	4.0	3.6		1.35/105°	1.70/125°	2.05/130°	2.35/125°	2.85/120°	3.30/120°	3.65/115°	3.95/115°	4.55/100°	5.05/100°
	4.8	1.8					1.25/130°	1.50/140°	1.75/135°	1.95/140°	2.10/140°	2.50/135°	2.75/130°
	4.8	3.6		1.50/120°	1.90/135°	2.30/135°	2.70/135°	3.35/125°	3.85/125°	4.30/120°	4.65/120°	5.35/105°	5.90/115°
	5.7	3.6		1.90/120°	2.20/130°	2.45/135°	3.20/135°	3.85/130°	4.50/125°	5.05/120°	5.50/115°	6.30/115°	6.95/110°
	5.7	4.0		2.05/120°	2.65/125°	3.10/125°	3.60/120°	4.60/117°	5.20/115°	5.80/115°	6.30/115°	7.20/105°	8.00/110°
	5.7	5.5		3.15/110°	4.25/120°	5.35/120°	6.20/115°	7.60/110°	8.65/110°	9.70/110°	10.50/105°	12.10/105°	13.65/105°
	6.4	4.0		2.40/115°	2.85/125°	3.45/130°	4.00/130°	4.85/125°	5.75/120°	6.35/120°	7.00/120°	8.00/110°	8.90/115°
	6.4	5.5		3.60/110°	4.85/120°	6.10/120°	7.00/120°	8.55/115°	9.80/115°	10.95/110°	12.25/110°	13.80/103°	15.50/110°
	7.0	4.0		2.55/130°	3.05/130°	3.80/135°	4.45/130°	5.40/127°	6.20/125°	6.90/125°	7.50/120°	8.80/110°	9.80/115°
7.0	5.5		4.00/120°	5.35/115°	6.75/120°	7.80/110°	9.60/108°	10.95/110°	12.20/110°	13.35/105°	15.45/100°	17.15/105°	

※記載の数値は代表値であり、保証値ではありません。